

Водосточные желоба, водостоки Gardino, TOP, GUTTER DRAIN, Akasison, Vedro

Технические характеристики

Виды товаров: водосточные желоба для плоских крыш, водосточные желоба для наружного использования, водосточные желоба для наружных канализационных систем, системы вакуумных водоотводов с крыш (редукторы, муфты, кронштейны, компенсаторы, отводы, тройники трубы), наружные сливы и др.

По вопросам продаж и поддержки обращайтесь:

Алматы (7273)495-231
Ангарск (3955)60-70-56
Архангельск (8182)63-90-72
Астрахань (8512)99-46-04
Барнаул (3852)73-04-60
Белгород (4722)40-23-64
Благовещенск (4162)22-76-07
Брянск (4832)59-03-52
Владивосток (423)249-28-31
Владикавказ (8672)28-90-48
Владимир (4922)49-43-18
Волгоград (844)278-03-48
Вологда (8172)26-41-59
Воронеж (473)204-51-73
Екатеринбург (343)384-55-89

Иваново (4932)77-34-06
Ижевск (3412)26-03-58
Иркутск (395)279-98-46
Казань (843)206-01-48
Калининград (4012)72-03-81
Калуга (4842)92-23-67
Кемерово (3842)65-04-62
Киров (8332)68-02-04
Коломна (4966)23-41-49
Кострома (4942)77-07-48
Краснодар (861)203-40-90
Красноярск (391)204-63-61
Курск (4712)77-13-04
Курган (3522)50-90-47
Липецк (4742)52-20-81

Магнитогорск (3519)55-03-13
Москва (495)268-04-70
Мурманск (8152)59-64-93
Набережные Челны (8552)20-53-41
Нижний Новгород (831)429-08-12
Новокузнецк (3843)20-46-81
Ноябрьск (3496)41-32-12
Новосибирск (383)227-86-73
Омск (3812)21-46-40
Орел (4862)44-53-42
Оренбург (3532)37-68-04
Пенза (8412)22-31-16
Петрозаводск (8142)55-98-37
Псков (8112)59-10-37
Пермь (342)205-81-47

Ростов-на-Дону (863)308-18-15
Рязань (4912)46-61-64
Самара (846)206-03-16
Санкт-Петербург (812)309-46-40
Саратов (845)249-38-78
Севастополь (8692)22-31-93
Саранск (8342)22-96-24
Симферополь (3652)67-13-56
Смоленск (4812)29-41-54
Сочи (862)225-72-31
Ставрополь (8652)20-65-13
Сургут (3462)77-98-35
Сыктывкар (8212)25-95-17
Тамбов (4752)50-40-97
Тверь (4822)63-31-35

Тольятти (8482)63-91-07
Томск (3822)98-41-53
Тула (4872)33-79-87
Тюмень (3452)66-21-18
Ульяновск (8422)24-23-59
Улан-Удэ (3012)59-97-51
Уфа (347)229-48-12
Хабаровск (4212)92-98-04
Чебоксары (8352)28-53-07
Челябинск (351)202-03-61
Череповец (8202)49-02-64
Чита (3022)38-34-83
Якутск (4112)23-90-97
Ярославль (4852)69-52-93

Россия +7(495)268-04-70

Казахстан +7(7172)727-132

Киргизия +996(312)96-26-47

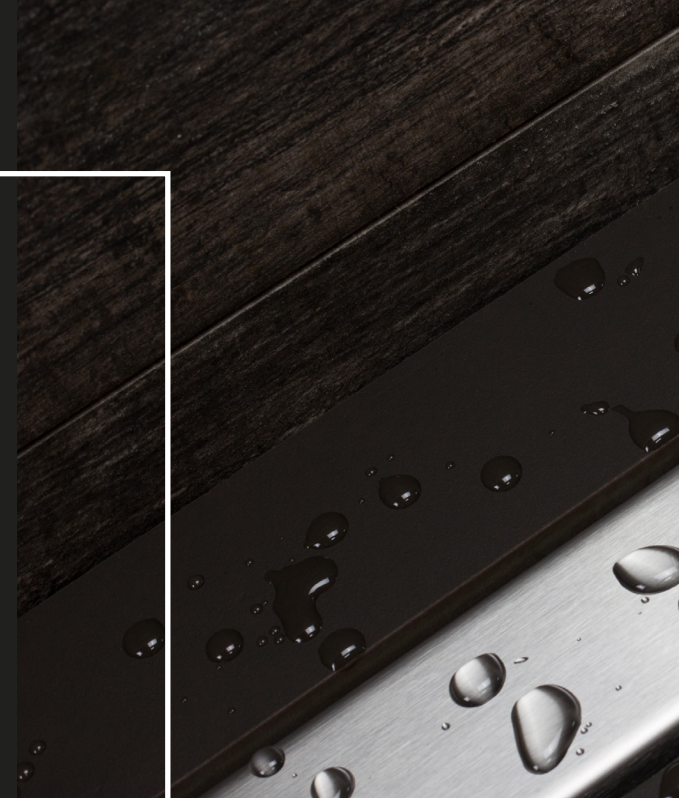
почта: pad@nt-rt.ru || сайт: <https://pestan.nt-rt.ru/>

Walk in showers represent new and elegant solution for bathroom. A barrier-free shower concept inspired and motivated us to create Confluo Smart Drains program. We made our Confluo drains of high quality materials, modular, easy to install and clean, cost effective and with modern design, in order to satisfy all customer needs. With more then 350 different models in our offer, we believe we can meet all their needs.

Dive into our Confluo Drains and discover your new gem in bathroom!

Advantages of Confluo shower drains:

- Huge product portfolio - more than 350 different models
- Modularity
- Modern design
- High functionality
- Best buy products







Quality and functionality |

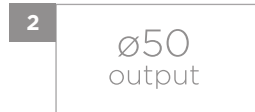


Confluo icons



1 Min. installation height

Minimal construction height of drain, from bottom of the base, up to the holder of the grid.



2 Base diameter outlet

Diameter of base outlet.



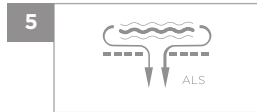
3 Maximum flow rate

Maximum flow rate with 20cm threshold.



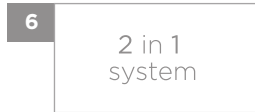
4 Base inlet diameter

Diameter of base inlet.



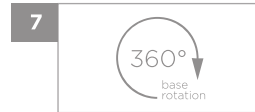
5 Anti-leaking system

Anti-Leaking System represents combination of drain construction and proper installation which allows all leaked and condensated water to go back to drain.



6 2 in 1 system

Grid of drain can be turned and used both for stainless steel/gold and ceramic/glass finish.



7 Base rotation

Base of drain can be rotated 360 degrees.



8 Fine output adjustment

Output of drain can be adjusted by 15 degrees.



9 Water seal height



10 Fine ceramic adjustment

Model have system for ceramic height leveling, so clients have flexibility in choosing surface in bathroom.



11 Self-cleaning base

Output of drain is constructed in way that whatever goes through grid for hair will for sure go through output and then through sewage system.



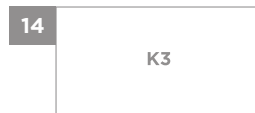
12 Handicapped accessible

Easy access to the shower.



13 Material of grid

Grid is made of stainless steel AISI 304. Optionally, we can produce grid from stainless steel AISI 316.



14 Load class of grid

Grid is classified as K3, which means that it can withstand 300kg of pressure.



15 Ceramic adjustment

Unlimited ceramic height leveling.

Confluo Linear drains

We produce our Confluo Linear drains in 3 different models (Premium Line, Slim Line and Frameless line), 9 different sizes (300mm, 450mm, 550mm, 650mm, 750mm, 850, 950, 1050mm and 1150mm) and 3 different grid finishes (Brushed Stainless Steel, Glass and Gold). All models, except Slim, have 2 in 1 system where the same model can be used both with Stainless Steel/Gold and Tile/Glass finish and are characterized as ultra low 360 degrees rotatable self-cleaning S base.



Confluo Wall drain

As Peštan Company always follow trends on world market, we have prepared for our costumers the latest model in world of shower drains - Wall drain. This model represents innovation in industry and, besides its new and modern design, it is perfect model for renovations and bathroom with concealed cisterns. Wall drain has body made of plastic and it is supplied with 2 different grids (Stainless Steel and Gold).



Confluo Standard drains

Peštan Company offers to clients more than 150 different models of Confluo Standard drains. All models have body made from plastic and grid made from stainless steel, glass or gold, which we deliver in various designs (Tide, Square, Drops, Black & White Glass, Ceramic and Gold) and sizes (10cmx10cm, 15cmx15cm and 20cmx20cm). Main advantages are: Big variety of models, high flow rate, modular and flexible systems with 6 different output, 3 different types of siphons. You can make your own floor drain system easy for installation and maintenance.



Confluo Garden and Roof drains

In our program of outside drainage, we have 2 models - Confluo Top and Confluo Gardino. Confluo Top is used for drainage of water on flat roofs, and Confluo Gardino is made for driveways and garages. Main advantages of this models: High flow rate, modular and flexible system with 4 different outputs, drainage/anti-leaves system, easy installation and maintenance.





CONFLUO DESIGN by PEŠTAN

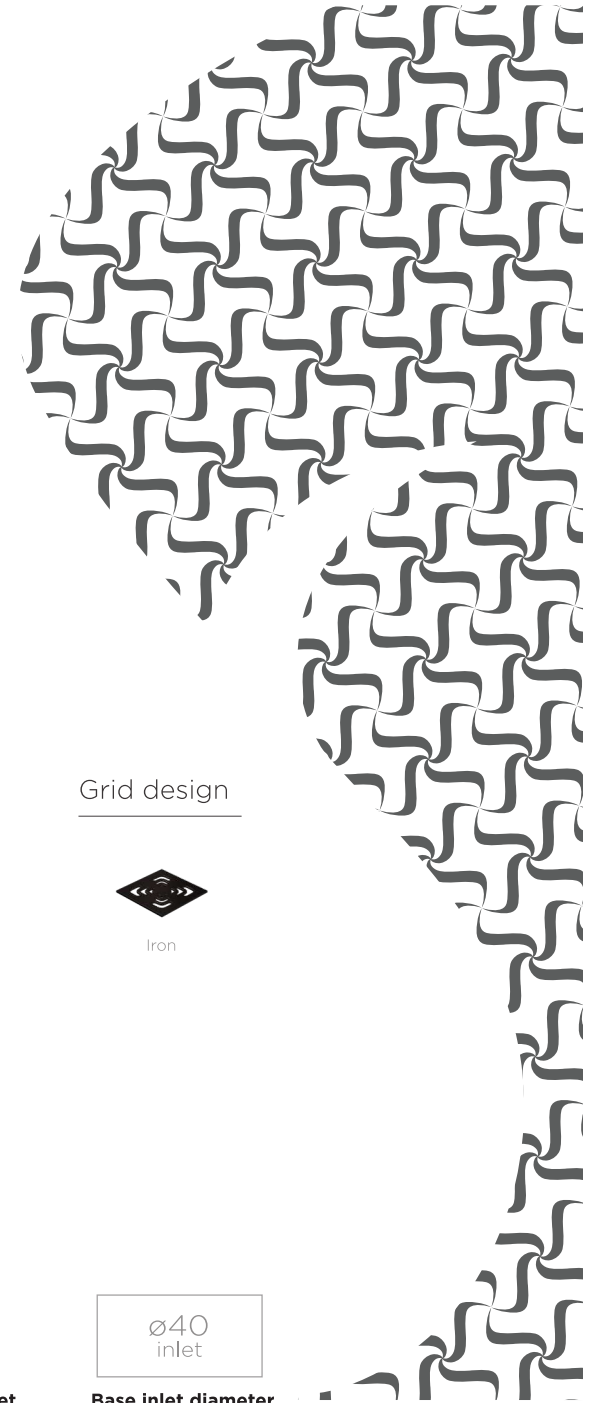
www.pestan.net

Confluo Gardino

SHAPE: Square
USAGE: Yards and open garage spaces
DETAILS: Square shape, small size of the frame, stainless steel, adjustable to the slope, modern design, functional

FEATURES:

- Simple model with good features
- Made of modern materials with high level of system security
- Keeps leaves out
- High flow
- Drainage add-on



Models with 15x15 grid



48l/min

Maximum flow rate

360°

Base rotation

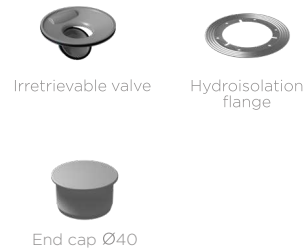
Handicapped accessible

Fine output adjustment

ø50
 output
Base diameter outlet

ø40
 inlet
Base inlet diameter

Optional



Grid design





CONFLUO DESIGN by PESTAN

www.pestan.net

Confluo Top

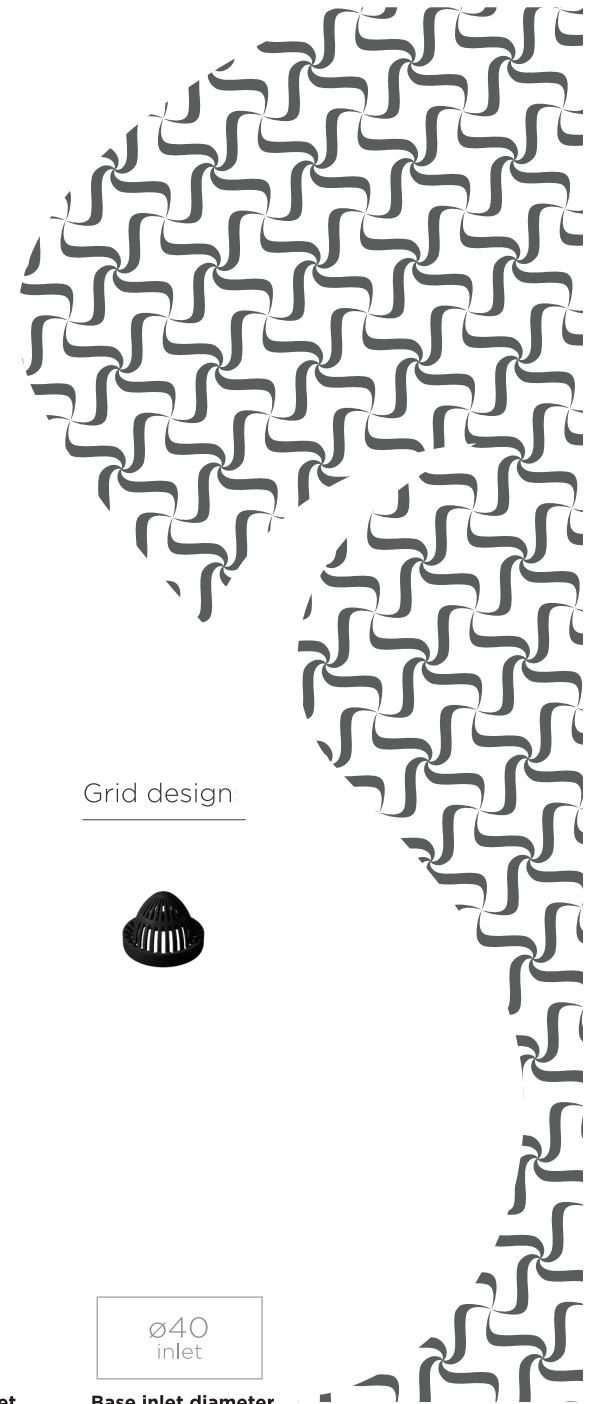
SHAPE: Little cap

USAGE: Flat roofs

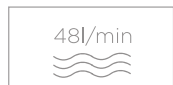
DETAILS: Small size of the frame, stainless steel, adjustable to the slope, modern design, functional

FEATURES:

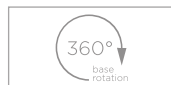
- Simple model with good features
- Made of modern materials with high level of system security
- Keeps leaves out
- High flow



Models with 15x15 grid



Maximum flow rate



Base rotation



Handicapped accessible



Fine output adjustment



Base diameter outlet



Base inlet diameter

Optional



Grid design:



MODULARITY

In order to satisfy the needs of our customers and achieve unlimited flexibility, we created Confluo drains with modular parts, which can be used on multiple products.

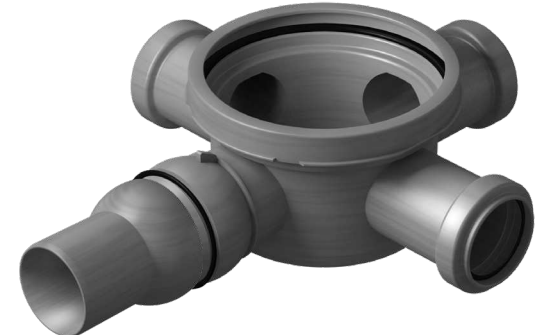
Base options:



BASE WITH
1 HORIZONTAL OUTLET



BASE WITH 1 HORIZONTAL
OUTLET/1 INLET



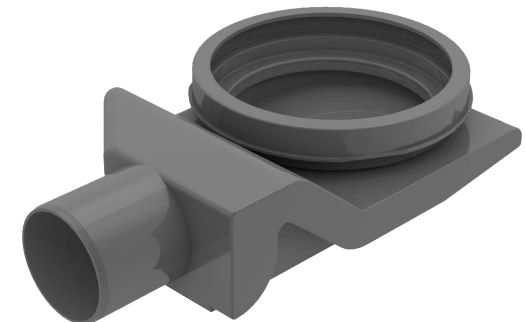
BASE WITH 1 HORIZONTAL
OUTLET/3 INLETS



VERTICAL BASE



S BASE WITH 28MM OF WATER
SEAL AND ADJUSTABLE OUTPUT



S BASE WITH
25MM OF WATER SEAL

ADAPTERS



5cm water seal adapter as per EN 1253



USA 2" vertical adapter for American plumbing p-trap systems made from ABS and PVC.



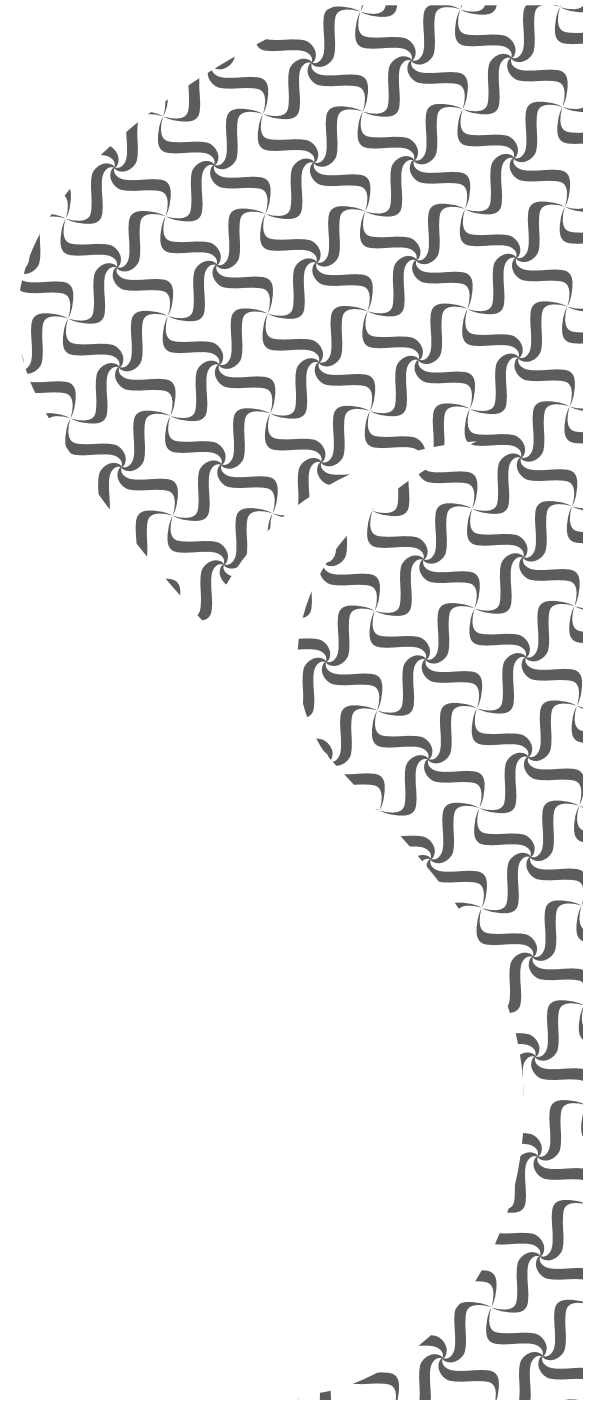
MENA DN 90,75,63,50,40 mm vertical adapter made from PP for plumbing systems with siphon in dropped ceiling.







Ultra flat DN 50mm vertical adapter for Linear and Wall models made from PE for plumbing systems with siphon in dropped ceiling.



DN 100mm vertical adapter for Linear and Wall models made from PE for Israel plumbing system.



Compatibility of adapters with Confluo models:

	Confluo Premium Line	Confluo Slim Line	Confluo Standard	Confluo Wall
	✓		✓	
	✓	✓		✓
	✓	✓	✓	✓
	✓	✓		✓
	✓	✓		✓

Gutter drain

Technical Datasheet

Application

Peštan gutter drain is intended and designed for adequate drainage of surface water (rainwater) in external sewage systems

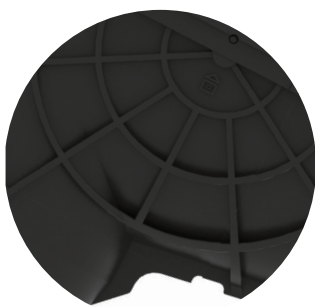
Product description

Made of polypropylene. The drain allows the connection of gutter pipes of different diameters. The drain pipe connection includes 2 options (110 and 125 mm), which are used depending on the pipeline to which the drain is connected. The gutter drain contains a dry valve that blocks the entry of pests from the pipeline, as well as a basket (leaf catcher) which maximally simplifies and facilitates cleaning. The design also enables the connection of different diameters of gutter pipes in a simple way, by cutting the appropriate diameters to DN50, DN75, DN90, DN110, and DN125.

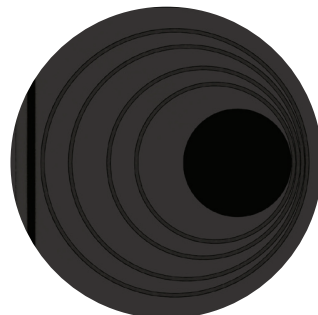
The leaf catcher has improved water flow thanks to the central ribbed pillar which in the case of clogging the bottom, provides undisturbed water flow.

The folding handle provides easy removal of catchers and easier disposal of collected leaves. The cup with a conic shape provides easy removal without getting stuck.

Advantages



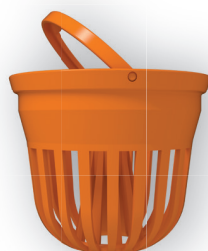
Strengthened ribs for the better adhesion to the base (concrete)



Biggs for cutting appropriate gutter diameter

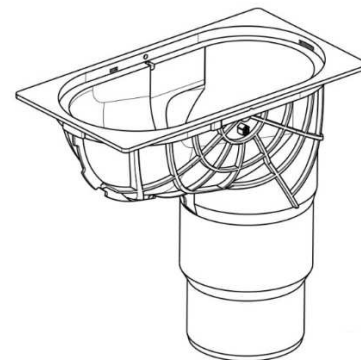
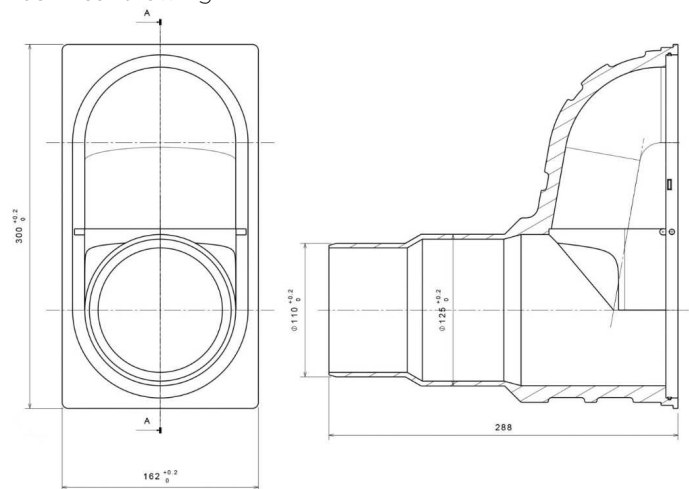


Valve for protection against pest entrances



The leaf catcher

Technical drawing



Inlet diameters (mm) Smooth pipe

50
75
90
110
125

Outlet diameters (mm) Smooth pipe

110
125

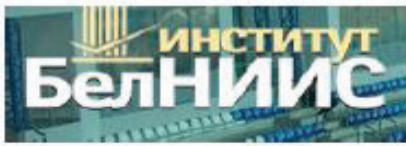
Chemical resistance

PEŠTAN gutter drain is chemically durable material. Resistant to fresh and salt water, to industrial chemicals and highly abrasive liquids.

*Plastic pipes and fittings - Combined chemical-resistance classification table ISO/TR 10358.

Technical Assistance

Our technical and engineering team is supported and advised by European institutes. For more information about products please contact PEŠTAN technical support or regional salesman.



BELNIIS - Belarus



BELNIIS - Belarus



IMS - Serbia



GOST R - Russia



VUPS - Czech Republic



MPA - Germany



IGH - Croatia

GUTTER

DRAIN



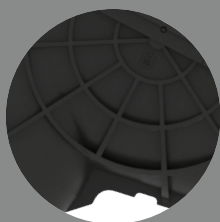
General characteristics

☑ Made of polypropylene, the product is intended and designed for adequate drainage of surface water (rainwater) in external sewage systems. The drain allows the connection of gutter pipes of different diameters. The drain pipe connection includes 2 options (110 and 125 mm), which are used depending on the pipeline to which the drain is connected.

The gutter drain contains a dry valve that blocks the entry of pests from the pipeline, as well as a basket (leaf catcher) which maximally simplifies and facilitates cleaning. The design also enables the connection of different diameters of gutter pipes in a simple way, by cutting the appropriate diameters to DN50, DN75, DN90 DN110, and DN125.

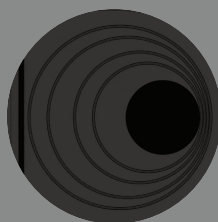
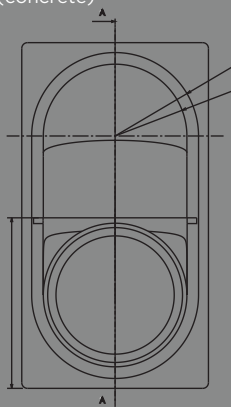
Full name of product: GUTTER DRAIN VERTICAL

Product code: 10299090



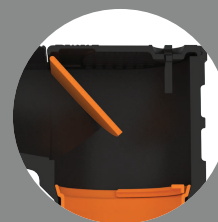
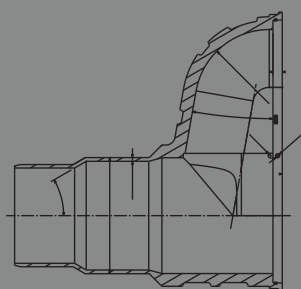
Strengthened ribs for the better adhesion to the base (concrete)

adhesion to the base (concrete)



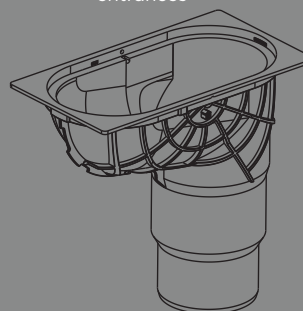
Biggs for cutting

appropriate gutter diameter



Valve for protection against pest entrances

against pest entrances



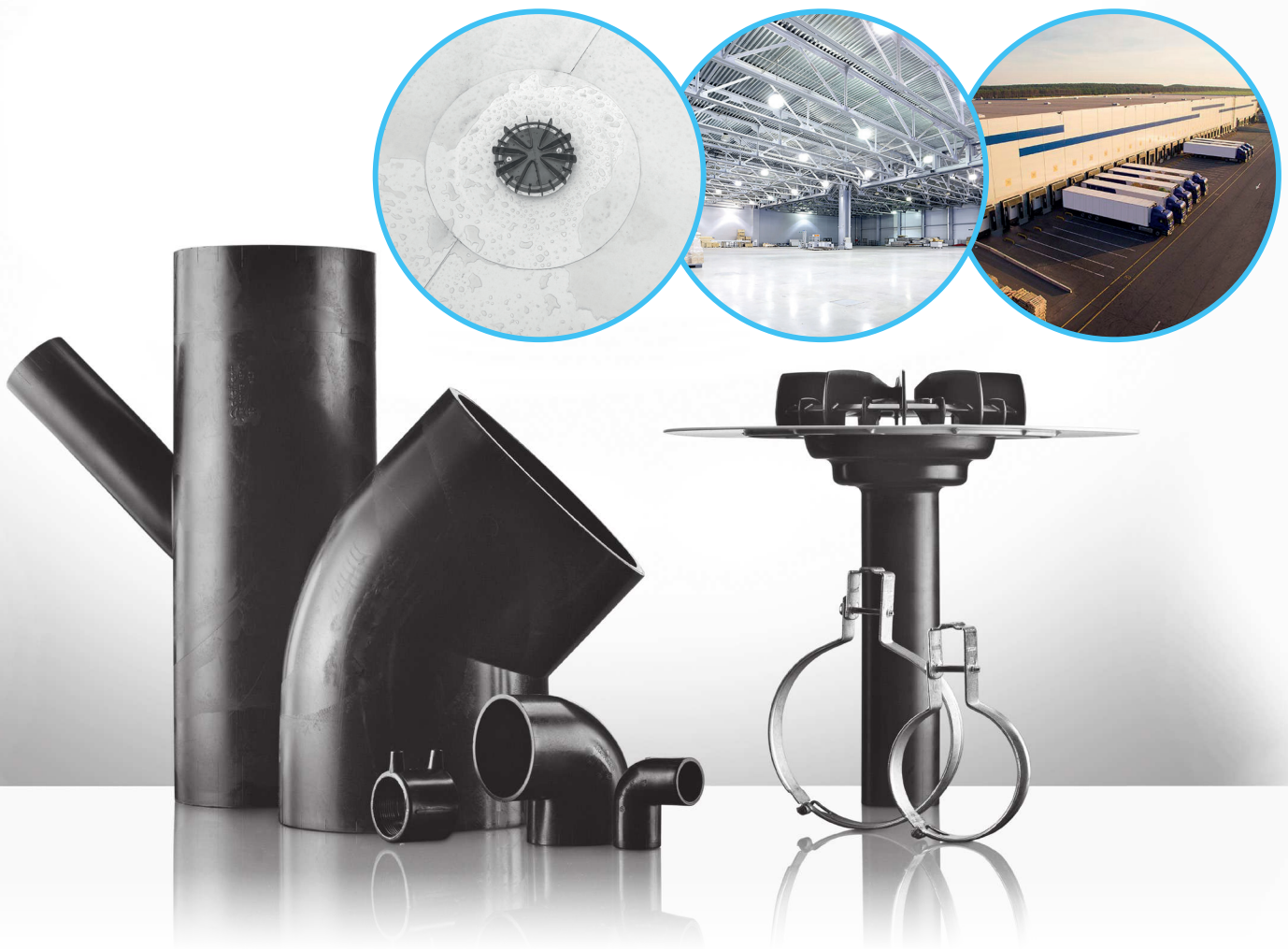


Leaf catcher

The leaf catcher has improved water flow thanks to the central ribbed pillar which in the case of clogging the bottom, provides undisturbed water flow.

The folding handle provides easy removal of catchers and easier disposal of collected leaves. The cup with a conic shape provides easy removal without getting stuck.





UNIVERSAL, EFFICIENT ROOF OUTLETS

- Up to 740 m² of roof area served by standard roof outlet,
- Dedicated flanges to roofs covered by: PVC, FPO, TPO, Bitumen,
- Dedicated heating elements,
- Available diametres: DN75, DN90.

COMPLEX SOLUTIONS

- Dedicated roof outlets for metal & concrete gutters,
- Temporary and adjustable emergency roof outlets in offer,
- Diameter range: DN40-DN315,
- 2 ways of welding & 3 ways of fixing available.

CHECKED AND LONGLIFE SOLUTIONS

- PEHD ensure longlasting and safe connections,
- Double use of PEHD as material: siphonic & gravitary roof drainage,
- Up to 15 years system's warranty available*,
- Hundreds of reference objects worldwide.

* On chosen markets.

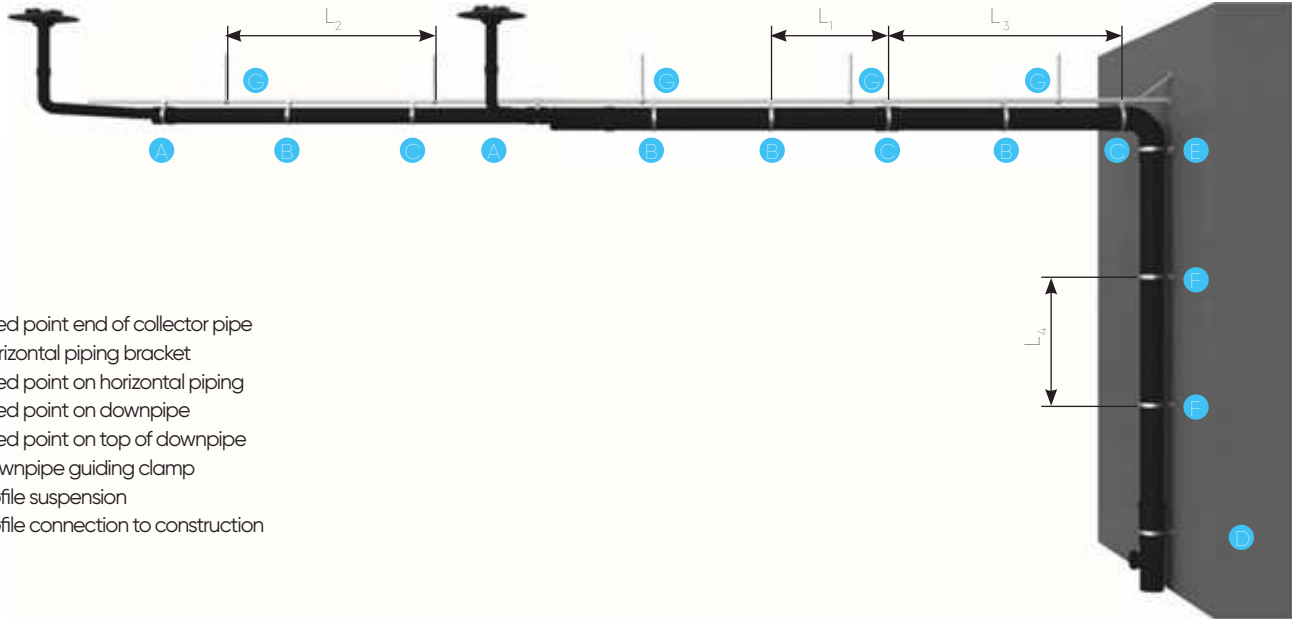
SAFE & QUICK FIXING

- Unique bracketing system, improving the safety level and reducing fixing time,
- Free lease of Buttwelders & Electrofusion welders*,
- Manufacturing & Logistic Hub in Eastern Europe (Poland),
- Partnership and tool offers for Installers.

PROFESSIONAL & QUICK SUPPORT

- Projects in max. 5 office days,
- Free trainings for: Designers, Installers, Wholesellers,
- CAD/BIM Libraries free of charge,
- Technical support on each stage of investment proces.

Efficient and safe option for siphonic roof drainage



- A** Fixed point end of collector pipe
- B** Horizontal piping bracket
- C** Fixed point on horizontal piping
- D** Fixed point on downpipe
- E** Fixed point on top of downpipe
- F** Downpipe guiding clamp
- G** Profile suspension
- H** Profile connection to construction

FIXED POINT LOCATION

- Every 10 m. of horizontal piping. At beginning/end of collector pipe,
- Before direction change,
- Before reduction,
- Before Y-Branch.

FIXING TO BUILDING CONSTRUCTION (RECOMMENDED)

- beginning/end of collector pipe,
- each 12 m. of horizontal piping,
- change of horizontal piping direction,
- wall transmission (both sides).

Diameter (d ₁) Pipe (mm)	Profile (mm)	Max. distance of clamping on the horizontal L ₁ (m)	Max. distance of profile suspension L ₂ (m)	Max. distance of fixed point (horizontal) L ₃ (m)	Max. distance on the vertical piping L ₄ (m)
40, 50, 56, 63	30 x 30	0,85	2,50	10,00	1,00
75, 90	30 x 30	0,85	2,50	10,00	1,25
110	30 x 30	1,00	2,50	10,00	1,65
125	30 x 30	1,25	2,50	10,00	1,65
160	30 x 30	1,65	2,00	10,00	2,50
200	30 x 30	1,65	1,65	10,00	2,50
250	41 x 41	1,65	1,65	10,00	2,50

Total weight of system, filled by the water & fixing elements

d ₁ (mm)	40	50	56	63	75	90	110	125	160	200	250	315
G (kg/m)	2,9	3,7	4,2	4,8	6,2	8,1	11,2	14,0	21,8	33,3	51,9	81,0
F (kg/T)	7,4	9,1	10,4	12,1	15,4	20,3	28,1	35,0	43,7	55,0	85,7	133,7

F = Total force in suspension point by maximal fixing distance.

Max. distance of profile suspension as a function of max. available force*

d ₁ (mm)	15 kg/m ² L ₂	20 kg/m ² L ₂	25 kg/m ² L ₂	30 kg/m ² L ₂	35 kg/m ² L ₂	40 kg/m ² L ₂	45 kg/m ² L ₂	50 kg/m ² L ₂
40, 50, 56, 63	2,50	2,50	2,50	2,50	2,50	2,50	2,50	2,50
75	2,40	2,50	2,50	2,50	2,50	2,50	2,50	2,50
90	1,80	2,50	2,50	2,50	2,50	2,50	2,50	2,50
110	1,30	1,80	2,20	2,50	2,50	2,50	2,50	2,50
125	1,10	1,40	1,80	2,10	2,50	2,50	2,50	2,50
160	-	-	1,10	1,40	1,60	1,80	2,00	2,00
200	-	-	-	-	1,10	1,20	1,40	1,50
250	-	-	-	-	-	-	-	-
315	-	-	-	-	-	-	-	-

*By L₂ values below 1.0 m. typical connection with buildings' construction is not possible. In this case, there are recommended supporting construction systems (should be considered to improve stresses balance) or systems which will allow suspending profiles to steel construction beams.

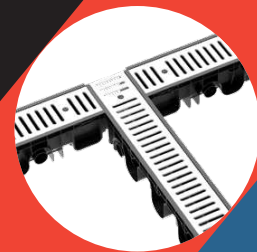
V
VEDRO

OUTDOOR DRAIN

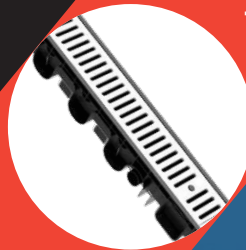
The Vedro drain is intended for draining surface water in external sewage systems. Thanks to the adequate performance and design of the drain, as well as high durability, drainage is carried out in the most efficient way.

Full name of product: VEDRO OUTDOOR DRAIN A15 METAL GRID

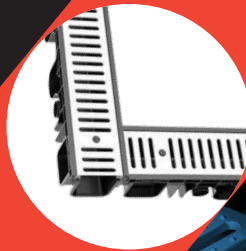
Product code: 13705000



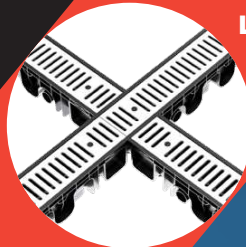
T CONNECTION



I CONNECTION



L CONNECTION



X CONNECTION



CHARACTERISTICS

- High quality and reliability - standard EN 1433
- Two openings on the side for pipes DN 50 mm and on the bottom side DN 75 and 110 mm
- Effective removal of rainwater from external surfaces
- Massive ribs for structural strength
- System with four fixing points for the base
- Modularity in the continuation of drains in L, X, T, I shapes for additional practicality

По вопросам продаж и поддержки обращайтесь:

Алматы (7273)495-231
Ангарск (3955)60-70-56
Архангельск (8182)63-90-72
Астрахань (8512)99-46-04
Барнаул (3852)73-04-60
Белгород (4722)40-23-64
Благовещенск (4162)22-76-07
Брянск (4832)59-03-52
Владивосток (423)249-28-31
Владикавказ (8672)28-90-48
Владимир (4922)49-43-18
Волгоград (844)278-03-48
Вологда (8172)26-41-59
Воронеж (473)204-51-73
Екатеринбург (343)384-55-89

Иваново (4932)77-34-06
Ижевск (3412)26-03-58
Иркутск (395)279-98-46
Казань (843)206-01-48
Калининград (4012)72-03-81
Калуга (4842)92-23-67
Кемерово (3842)65-04-62
Киров (8332)68-02-04
Коломна (4966)23-41-49
Кострома (4942)77-07-48
Краснодар (861)203-40-90
Красноярск (391)204-63-61
Курск (4712)77-13-04
Курган (3522)50-90-47
Липецк (4742)52-20-81

Магнитогорск (3519)55-03-13
Москва (495)268-04-70
Мурманск (8152)59-64-93
Набережные Челны (8552)20-53-41
Нижегород (831)429-08-12
Новокузнецк (3843)20-46-81
Ноябрьск (3496)41-32-12
Новосибирск (383)227-86-73
Омск (3812)21-46-40
Орел (4862)44-53-42
Оренбург (3532)37-68-04
Пенза (8412)22-31-16
Петрозаводск (8142)55-98-37
Псков (8112)59-10-37
Пермь (342)205-81-47

Ростов-на-Дону (863)308-18-15
Рязань (4912)46-61-64
Самара (846)206-03-16
Санкт-Петербург (812)309-46-40
Саратов (845)249-38-78
Севастополь (8692)22-31-93
Саранск (8342)22-96-24
Симферополь (3652)67-13-56
Смоленск (4812)29-41-54
Сочи (862)225-72-31
Ставрополь (8652)20-65-13
Сургут (3462)77-98-35
Сыктывкар (8212)25-95-17
Тамбов (4752)50-40-97
Тверь (4822)63-31-35

Тольятти (8482)63-91-07
Томск (3822)98-41-53
Тула (4872)33-79-87
Тюмень (3452)66-21-18
Ульяновск (8422)24-23-59
Улан-Удэ (3012)59-97-51
Уфа (347)229-48-12
Хабаровск (4212)92-98-04
Чебоксары (8352)28-53-07
Челябинск (351)202-03-61
Череповец (8202)49-02-64
Чита (3022)38-34-83
Якутск (4112)23-90-97
Ярославль (4852)69-52-93

Россия +7(495)268-04-70

Казахстан +7(7172)727-132

Киргизия +996(312)96-26-47

почта: pad@nt-rt.ru || сайт: <https://pestan.nt-rt.ru/>